

SUB-D FILTER CONNECTORS

GENERAL SPECIFICATIONS

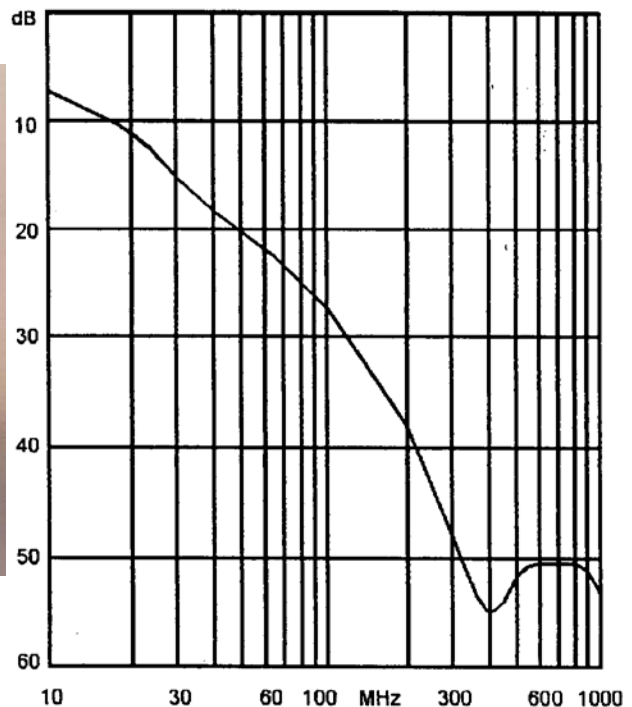
SUB D connectors with built-in capacitors, which provide excellent attenuation of EMI and RFI.

The connectors are available with 9,15,25 or 37 ways, plug or socket, in solderbucket, Straight - PC or 90 degree versions.

Contacts.....	Gold plated turned copper alloy.
Shell.....	Tin plated steel (plugs have contact dimples).
Minimum number of insertions....	500.
Contact resistance	max. 10 mΩ.
Current rating	5A.
Working voltage	100V.
Capacitance	1 nF (other values available on request).
Tolerance of capacitance	-20/+80%
Temperature range	-55 °C to 85 °C.

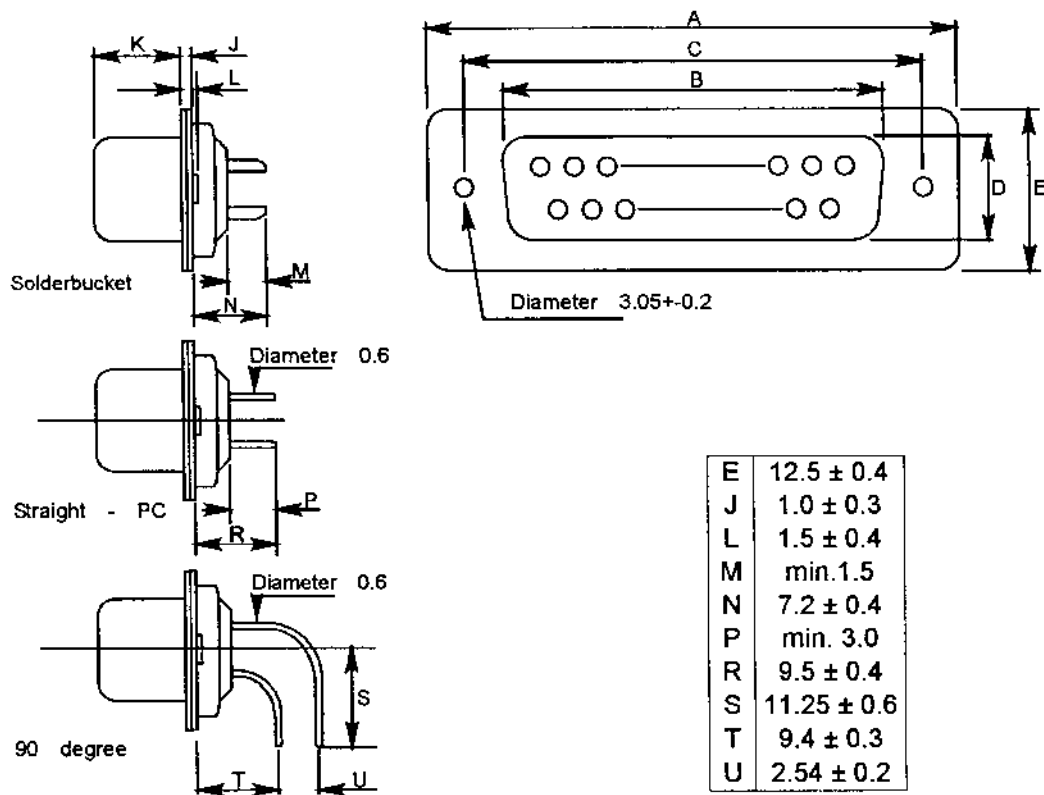
Part numbers for these connectors are listed 2 pages on.

Typical Loss vs. Frequency (50 ohm line)



SUB-D FILTER CONNECTORS

GENERAL SPECIFICATIONS



All dimensions in mm. Do Not Scale.

WAYS		A ± 0.4	B ± 0.3	C ± 0.2	D ± 0.3	K ± 0.3
9.0	Plug	30.8	17.7	25.0	9.1	6.0
	Socket		16.3		7.8	6.2
15.0	Plug	39.1	26.0	33.3	9.1	6.0
	Socket		24.6		7.8	6.2
25.0	Plug	53.0	40.2	47.0	9.6	5.9
	Socket		38.3		7.8	6.2
37.0	Plug	69.3	56.7	63.5	9.6	5.9
	Socket		54.8		7.8	6.2

Ferroperm EMC

SUB-D FILTER CONNECTORS

PART NUMBERS

To order these connectors, just specify the part number from the left hand column. For example, if you want a 15-way straight-PC socket, order part number B-2FC15S1.

Old Part Number	Part Number	No of ways and capacitance	Mounting style	Type
16 SD 12	B-2FC09P	9x1nF -20+80%	Solder Bucket	plug
16 SD 13	B-2FC09S	9x1nF -20+80%	Solder Bucket	socket
16 SD 14	B-2FC15P	15x1nF -20+80%	Solder Bucket	plug
16 SD 15	B-2FC15S	15x1nF -20+80%	Solder Bucket	socket
16 SD 16	B-2FC25P	25x1nF -20+80%	Solder Bucket	plug
16 SD 17	B-2FC25S	25x1nF -20+80%	Solder Bucket	socket
16 SD 18	B-2FC37P	37x1nF -20+80%	Solder Bucket	plug
16 SD 19	B-2FC37S	37x1nF -20+80%	Solder Bucket	socket
16 SD 28	B-2FC09P1	9x1nF -20+80%	Straight - PCB	plug
16 SD 29	B-2FC09S1	9x1nF -20+80%	Straight - PCB	socket
16 SD 30	B-2FC15P1	15x1nF -20+80%	Straight - PCB	plug
16 SD 31	B-2FC15S1	15x1nF -20+80%	Straight - PCB	socket
16 SD 32	B-2FC25P1	25x1nF -20+80%	Straight - PCB	plug
16 SD 33	B-2FC25S1	25x1nF -20+80%	Straight - PCB	socket
16 SD 34	B-2FC37P1	37x1nF -20+80%	Straight - PCB	plug
16 SD 35	B-2FC37S1	37x1nF -20+80%	Straight - PCB	socket
16 SD 36	B-2FC09P5	9x1nF -20+80%	90 degree PCB	plug
16 SD 37	B-2FC09S5	9x1nF -20+80%	90 degree PCB	socket
16 SD 38	B-2FC15P5	15x1nF -20+80%	90 degree PCB	plug
16 SD 39	B-2FC15S5	15x1nF -20+80%	90 degree PCB	socket
16 SD 40	B-2FC25P5	25x1nF -20+80%	90 degree PCB	plug
16 SD 41	B-2FC25S5	25x1nF -20+80%	90 degree PCB	socket
16 SD 42	B-2FC37P5	37x1nF -20+80%	90 degree PCB	plug
16 SD 43	B-2FC37S5	37x1nF -20+80%	90 degree PCB	socket

Ferroperm EMC